

SIERRA EcoDesign

PANADERO



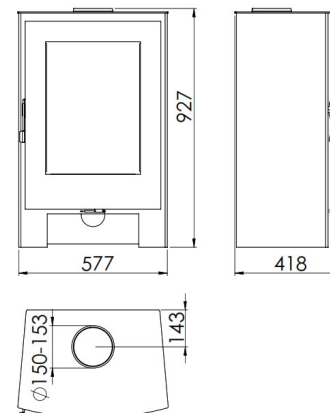
SIERRA EN

MEASURES

DIMENSIONS H x W x D	927x577x418 mm
GROSS/NET WEIGHT	134/120 kg
FIREWOOD ENTRANCE	410x585 mm
SMOKE FLUE	Ø 150-153 mm Top
EXTERNAL AIR INTAKE	Ø 80 mm

CHARACTERISTICS

CAST IRON GRILL	
NOMINAL HEAT OUTPUT	8,7 KW
EFFICIENCY	77%
CO EMISSIONS	0,10%
HEAT RESISTANT PAINT	800°C
CERAMIC GLASS HEAT RESISTANCE	750°C
EAN 8426964185553	
REF. PANADERO 18555	



PRODUCT PLUS

ECODESIGN



EXTERNAL AIR INTAKE



VERMICULITE LINING



WOOD LOGS UP TO 50 CM



HEATING VOLUME



CLEAN GLASS SYSTEM



DOUBLE COMBUSTION



A

